

Public Document Pack



MEETING:	Health and Wellbeing Board
DATE:	Thursday 9 November 2023
TIME:	2.00 pm
VENUE:	Council Chamber, Barnsley Town Hall

SUPPLEMENTARY AGENDA

- 6 Cold Weather Plan (presentation) - Julie Tolhurst (HWBB.09.11.23/6) (*Pages 3 - 10*)

To: Chair and Members of Health and Wellbeing Board:-

Councillor Wendy Cain, Cabinet Spokesperson – Public Health and Communities (Chair)
Councillor Trevor Cave, Cabinet Spokesperson – Children’s
Councillor Jo Newing, Cabinet Spokesperson – Place Health and Adult Social Care
Wendy Lowder, Place Director - Health and Care Barnsley, BMBC and South Yorkshire ICS
Anna Hartley, Executive Director Public Health & Communities, BMBC
Carly Speechley, Executive Director Children’s Services, BMBC
Kathy McArdle, Service Director Regeneration and Culture, BMBC
Adrian England, Chair, HealthWatch Barnsley and Chair, MHLDA Partnership
Amanda Garrard, Chief Executive, Berneslai Homes
Jamie Wike, Deputy Place Director, NHS South Yorkshire ICB (Barnsley)
Bob Kirton, Deputy Chief Executive, Barnsley Hospital NHS Foundation Trust
Simon Wanless, District Commander, South Yorkshire Police
Jane Holliday, Chief Executive Officer, Barnsley Community and Voluntary Services
Carrie Sudbury, Chief Executive, Barnsley and Rotherham Chamber of Commerce
Michael Hirst, Chief Executive Officer, Barnsley Premier Leisure

Please contact Andrew Shirt by email governance@barnsley.gov.uk

PUBLICATION DATE – 7 November 2023

This page is intentionally left blank

Barnsley Cold Weather Plan 2023-24

Julie Tolhurst - Public Health Principal
Jen Macphail- Senior Public Health Officer

The direct and indirect effects of cold weather



Exposure to cold weather can affect your health in different ways, even at temperatures as mild as 4 to 8 °C

Direct effects



- **heart attack**
- **stroke**
- **increased risk** of respiratory disease
- **weakened lung function** causing an increased risk of influenza
- **falls** and injuries
- **hypothermia**

Indirect effects

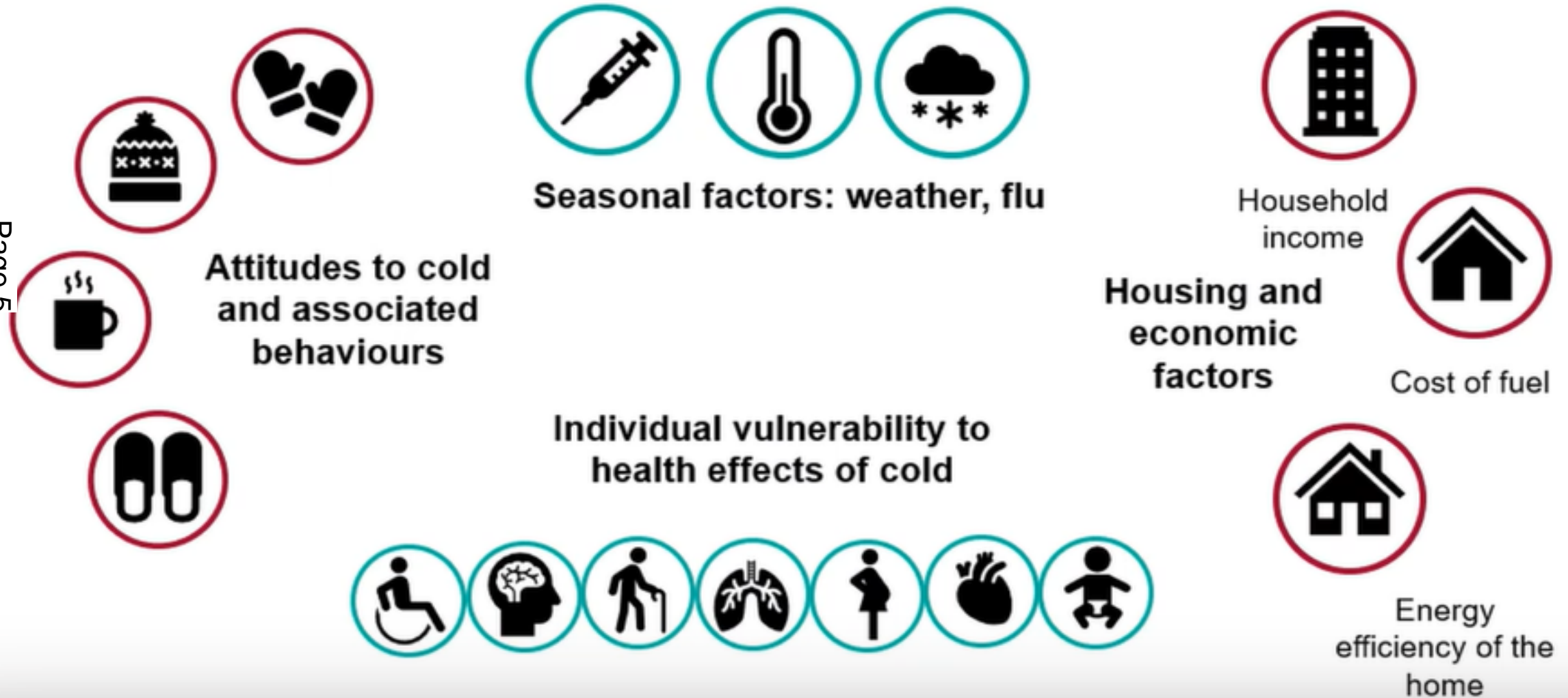


- **disruption to healthcare services** caused by snow and ice
- **carbon monoxide** poisoning
- **poorer mental health** and reduced educational and employment attainment have been linked to cold homes and fuel poverty



Who is affected by the cold and why?

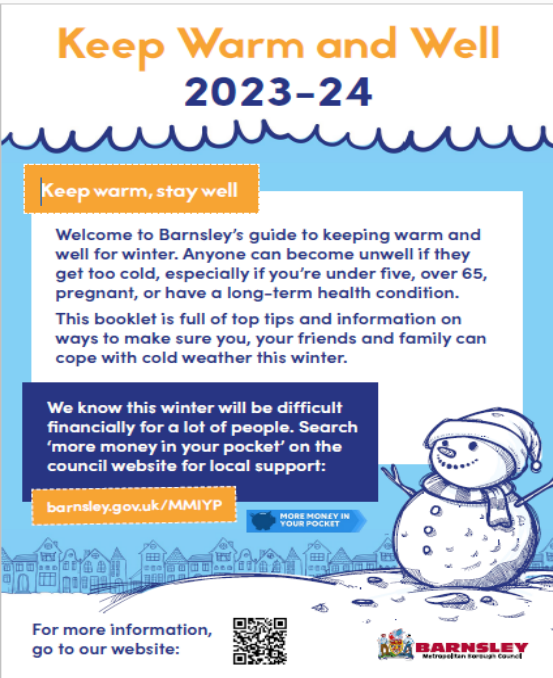
Page 5



Barnsley response

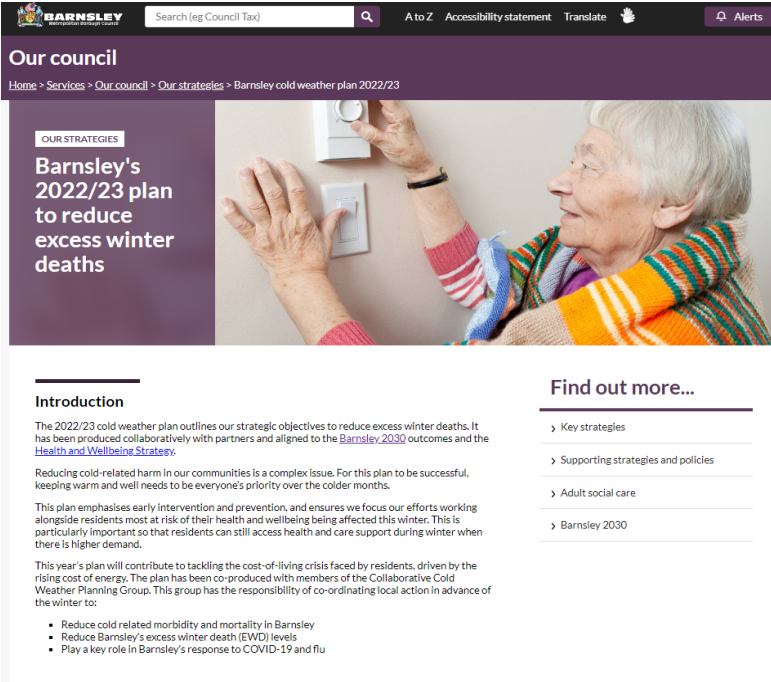
Stay well this winter

Key information and advice about support available locally. Paper and online versions. Easy read and poster in the pipeline.



Cold weather plan

multi-agency partnership approach to addressing the causes of cold related mortality and morbidity with links to support available over the winter months



Page 6



Barnsley – the place of possibilities.

Healthy Barnsley

Winter Support Available

Winter Support

Winter can cause additional pressures on households, especially with the continued rising cost of living. To help with this we have some specific support that's available this winter to help the residents of Barnsley.

Find out more about winter support



<https://www.barnsley.gov.uk/services/advice-benefits-and-council-tax/help-with-the-rising-cost-of-living/winter-support/>

Specific page for winter support available across the borough - includes links to Welcoming Spaces, Stay Well this Winter and the Warm Homes team, along with how to access support from the government.

New National Adverse Weather and Health Plan

[Adverse Weather and Health Plan - GOV.UK \(www.gov.uk\)](https://www.gov.uk) –
Published 27 April 2023.

- [Hot weather and health guidance](#)
- [Cold weather guidance](#) – launched 7 September 2023
- [Supporting Evidence](#)
- [AWHP Launch](#) & [Summer Prep webinars](#)



Recommendations

Health and Wellbeing Board members are asked to:-

- Note the content of 2023-2024 plan and recognise the work delivered to date to address winter mortality and cold related ill health in Barnsley
- Raise awareness of current guidance and support locally to address cold related ill health this winter and beyond
- Support a review of the plan going forward into 2024, aligned to the UKHSA Adverse Weather & Health Plan

This page is intentionally left blank